

NAME _____

DATE _____

PERIOD _____

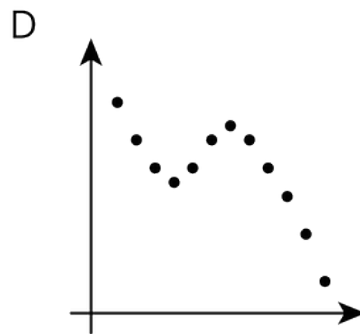
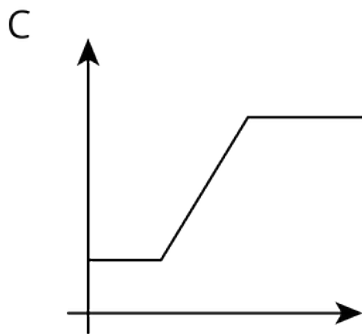
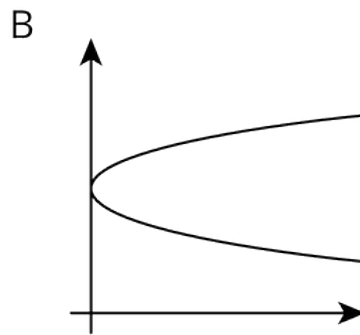
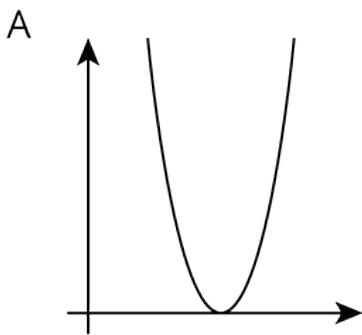
Unit 5, Lesson 5

More Graphs of Functions

Let's interpret graphs of functions.

5.1 Which One Doesn't Belong: Graphs

Which graph doesn't belong?





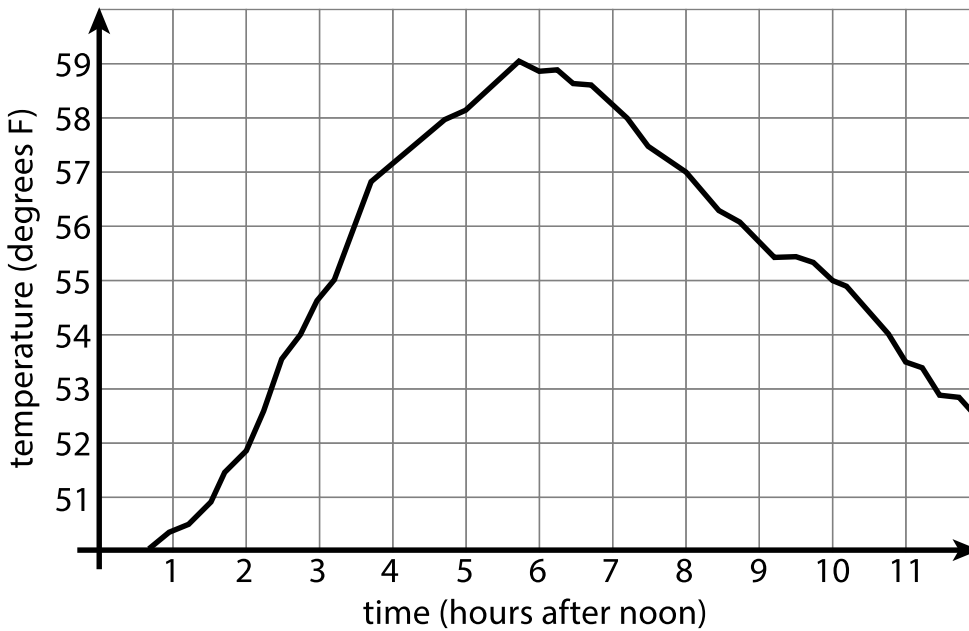
NAME _____

DATE _____

PERIOD _____

5.2 Time and Temperature

The graph shows the temperature between noon and midnight in one day in a certain city.



1. Was it warmer at 3:00 p.m. or 9:00 p.m.?
2. Approximately when was the temperature highest?
3. Find another time that the temperature was the same as it was at 4:00 p.m.
4. Did the temperature change more between 1:00 p.m. and 3:00 p.m. or between 3:00 p.m. and 5:00 p.m.?
5. Does this graph show that temperature is a function of time, or time is a function of temperature?

NAME _____

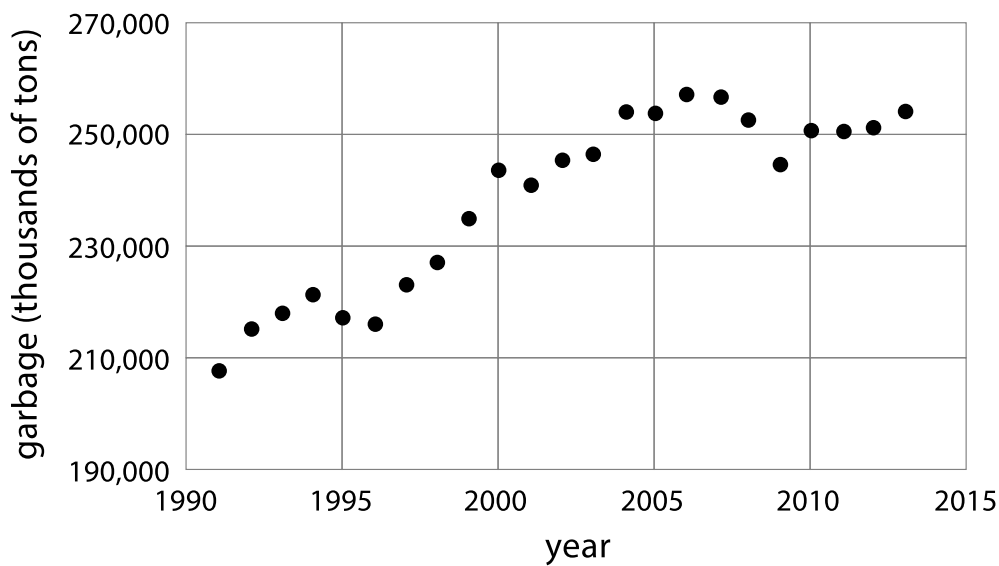
DATE _____

PERIOD _____

6. When the input for the function is 8, what is the output? What does that tell you about the time and temperature?

5.3 Garbage

1. The graph shows the amount of garbage produced in the US each year between 1991 and 2013.



- a. Did the amount of garbage increase or decrease between 1999 and 2000?
- b. Did the amount of garbage increase or decrease between 2005 and 2009?

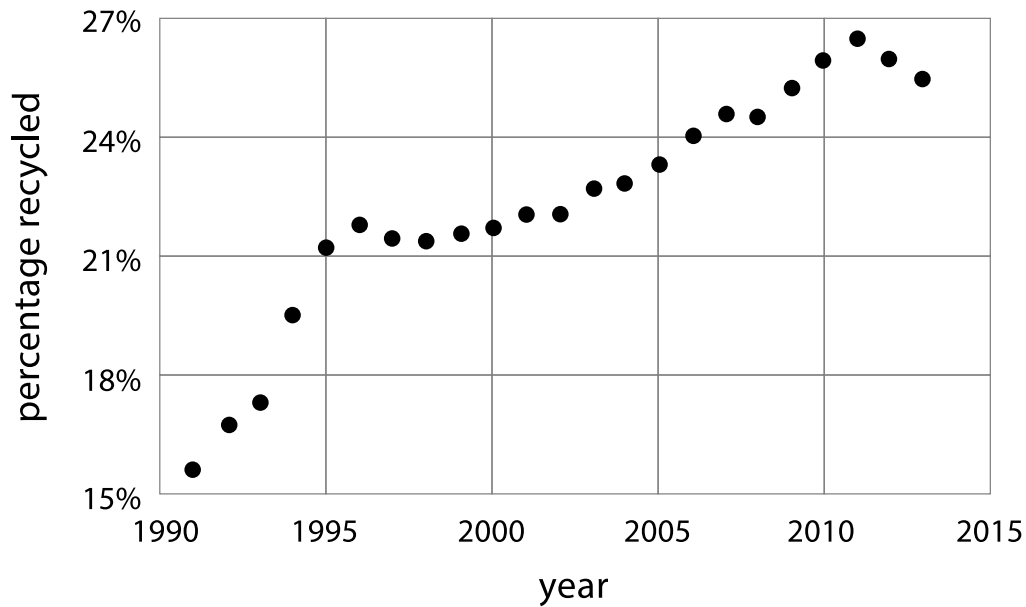


“Garbage dump” by PublicDomainPictures via Pixabay. Public Domain.

NAME _____ DATE _____ PERIOD _____

c. Between 1991 and 1995, the garbage increased for three years, and then it decreased in the fourth year. Describe how the amount of garbage changed in the years between 1995 and 2000.

2. The graph shows the percentage of garbage that was recycled between 1991 and 2013.



- a. When was it increasing?
- b. When was it decreasing?
- c. Tell the story of the change in the percentage of garbage recycled in the US over this time period.

NAME _____

DATE _____

PERIOD _____

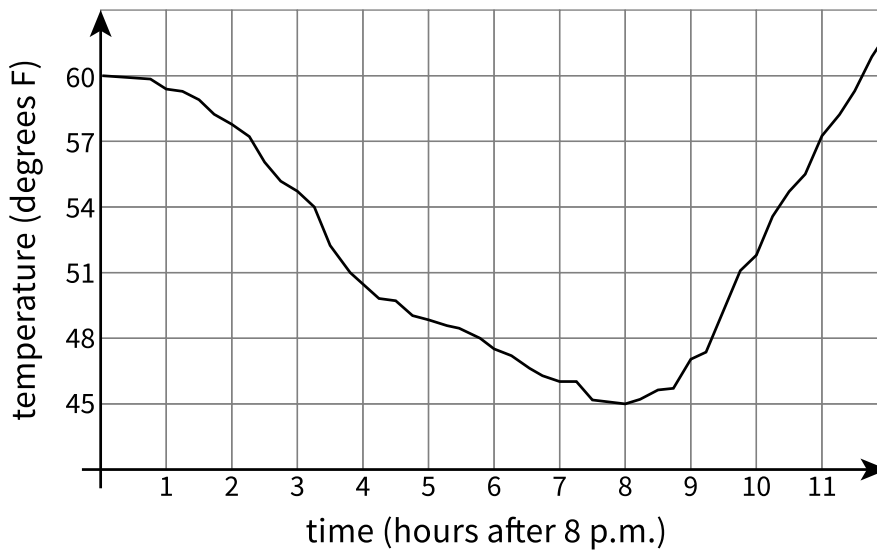
Are you ready for more?

Refer to the graph in the first part of the activity.

1. Find a year where the amount of garbage produced increased from the previous year, but not by as much it increased the following year.
2. Find a year where the amount of garbage produced increased from the previous year, and then increased by a smaller amount the following year.
3. Find a year where the amount of garbage produced decreased from the previous year, but not by as much it decreased the following year.
4. Find a year where the amount of garbage produced decreased from the previous year, and then decreased by a smaller amount the following year.

Lesson 5 Summary

Here is a graph showing the temperature in a town as a function of time after 8:00 p.m.



The graph of a function tells us what is happening in the context the function represents. In this example, the temperature starts out at 60° F at 8:00 p.m. It decreases during the night, reaching its lowest point at 8 hours after 8:00 p.m., or 4:00 a.m. Then it starts to increase again.