



NAME _____

DATE _____

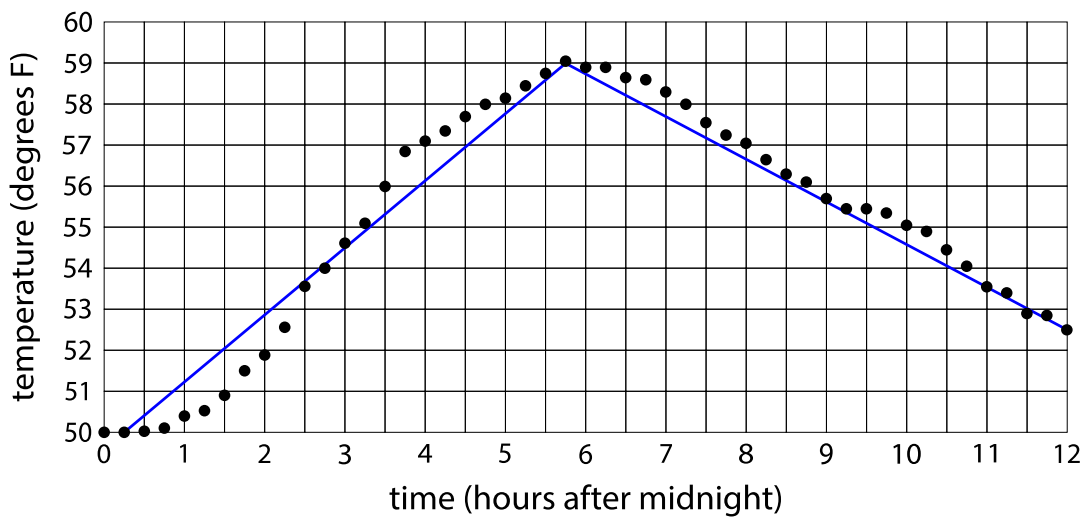
PERIOD _____

Unit 5, Lesson 10**Piecewise Linear Functions**

Let's explore functions built out of linear pieces.

10.1 Notice and Wonder: Lines on Dots

What do you notice? What do you wonder?



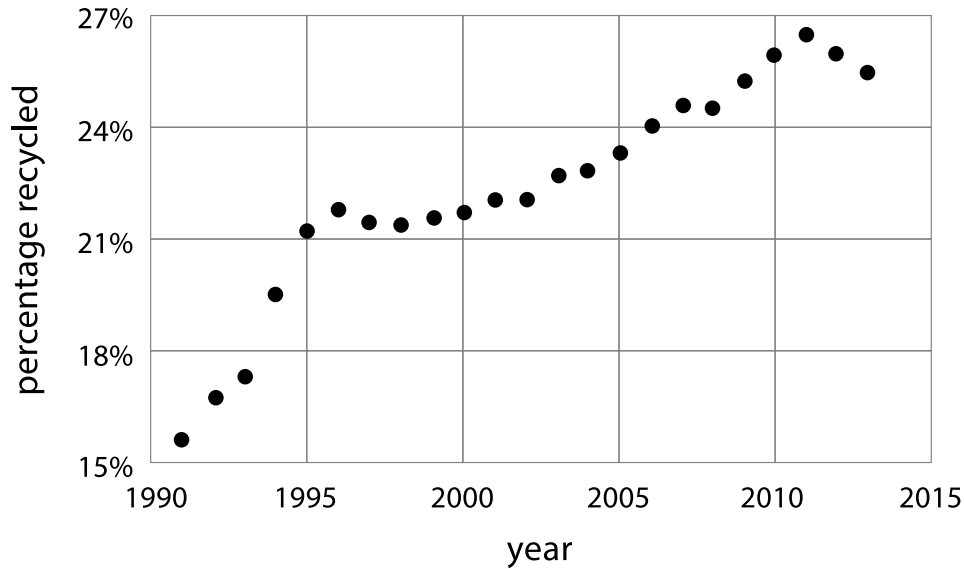


NAME _____

DATE _____

PERIOD _____

10.2 Modeling Recycling



1. Approximate the percentage recycled each year with a piecewise linear function by drawing between three and five line segments to approximate the graph.
2. Find the slope for each piece. What do these slopes tell you?

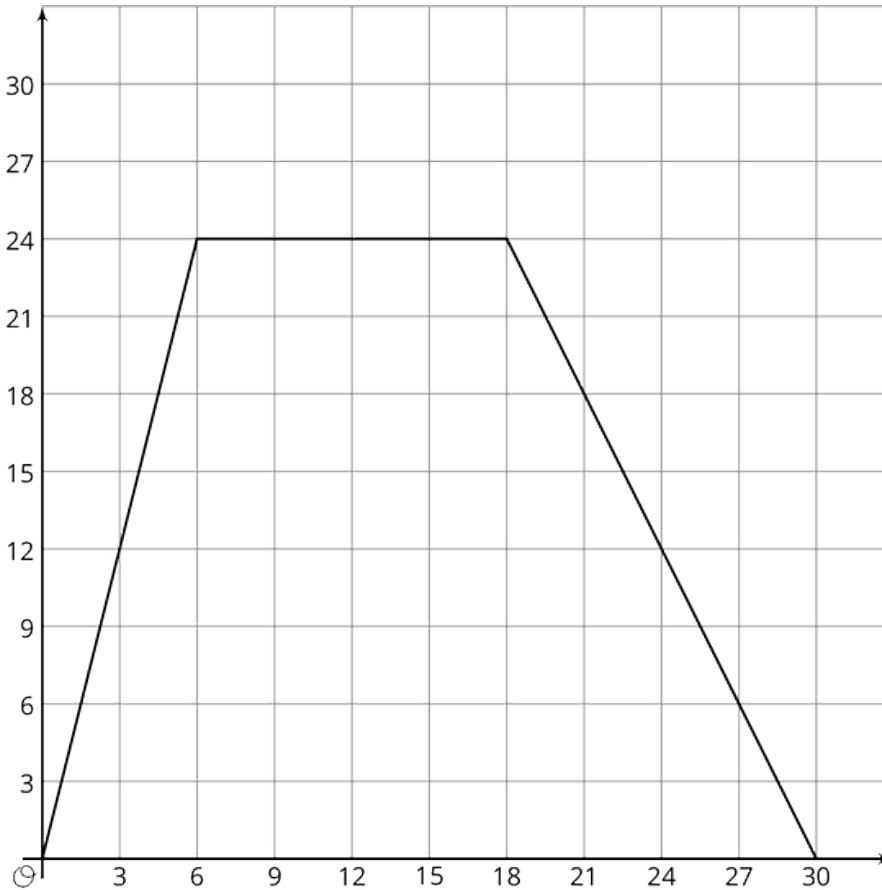
NAME _____

DATE _____

PERIOD _____

10.3 Dog Bath

Elena filled up the tub and gave her dog a bath. Then she let the water out of the tub.



1. The graph shows the amount of water in the tub, in gallons, as a function of time, in minutes. Add labels to the graph to show this.
2. When did she turn off the water faucet?
3. How much water was in the tub when she bathed her dog?
4. How long did it take for the tub to drain completely?

NAME _____

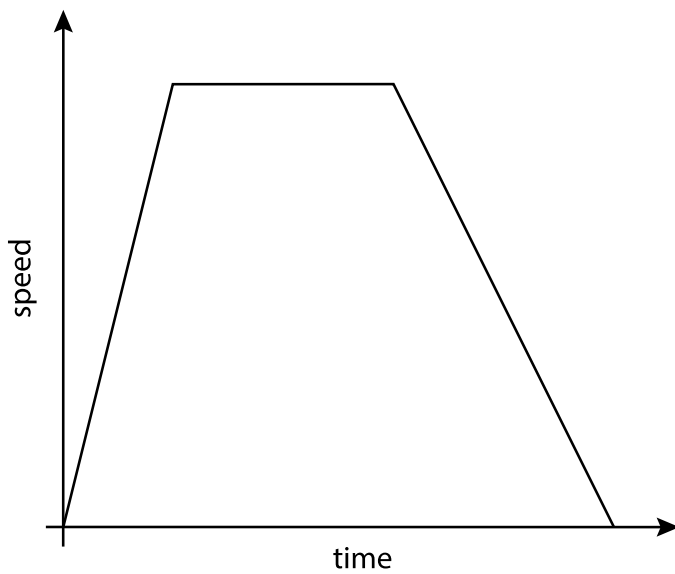
DATE _____

PERIOD _____

5. At what rate did the faucet fill the tub?

6. At what rate did the water drain from the tub?

10.4 Distance and Speed



The graph shows the speed of a car as a function of time. Describe what a person watching the car would see.

Are you ready for more?

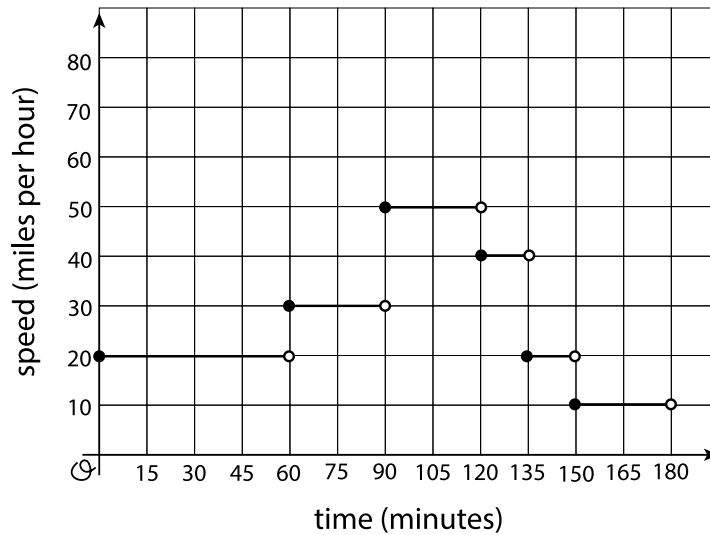
The graph models the speed of a car over a function of time during a 3-hour trip. How far did the car go over the course of the trip?

NAME _____

DATE _____

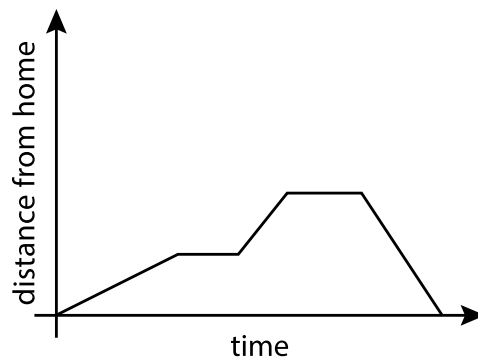
PERIOD _____

There is a nice way to visualize this quantity in terms of the graph. Can you find it?



Lesson 10 Summary

This graph shows Andre biking to his friend’s house where he hangs out for a while. Then they bike together to the store to buy some groceries before racing back to Andre’s house for a movie night. Each line segment in the graph represents a different part of Andre’s travels.



This is an example of a piecewise linear function, which is a function whose graph is pieced together out of line segments. It can be used to model situations in which a quantity changes at a constant rate for a while, then switches to a different constant rate.

We can use piecewise functions to represent stories, or we can use them to model actual data. In the second example, temperature recordings at several times throughout a day are modeled with a piecewise function made up of two line segments. Which line segment do you think does the best job of modeling the data?

NAME _____

DATE _____

PERIOD _____

